

Алматы (7273)495-231
Ангарск (3955)60-70-56
Архангельск (8182)63-90-72
Астрахань (8512)99-46-04
Барнаул (3852)73-04-60
Белгород (4722)40-23-64
Благовещенск (4162)22-76-07
Брянск (4832)59-03-52
Владивосток (423)249-28-31
Владикавказ (8672)28-90-48
Владимир (4922)49-43-18
Волгоград (844)278-03-48
Вологда (8172)26-41-59
Воронеж (473)204-51-73
Екатеринбург (343)384-55-89

Иваново (4932)77-34-06
Ижевск (3412)26-03-58
Иркутск (395)279-98-46
Казань (843)206-01-48
Калининград (4012)72-03-81
Калуга (4842)92-23-67
Кемерово (3842)65-04-62
Киров (8332)68-02-04
Коломна (4966)23-41-49
Кострома (4942)77-07-48
Краснодар (861)203-40-90
Красноярск (391)204-63-61
Курск (4712)77-13-04
Курган (3522)50-90-47
Липецк (4742)52-20-81

Магнитогорск (3519)55-03-13
Москва (495)268-04-70
Мурманск (8152)59-64-93
Набережные Челны (8552)20-53-41
Нижний Новгород (831)429-08-12
Новокузнецк (3843)20-46-81
Ноябрьск (3496)41-32-12
Новосибирск (383)227-86-73
Омск (3812)21-46-40
Орел (4862)44-53-42
Оренбург (3532)37-68-04
Пенза (8412)22-31-16
Петрозаводск (8142)55-98-37
Псков (8112)59-10-37

Пермь (342)205-81-47
Ростов-на-Дону (863)308-18-15
Рязань (4912)46-61-64
Самара (846)206-03-16
Саранск (8342)22-96-24
Санкт-Петербург (812)309-46-40
Саратов (845)249-38-78
Севастополь (8692)22-31-93
Симферополь (3652)67-13-56
Смоленск (4812)29-41-54
Сочи (862)225-72-31
Ставрополь (8652)20-65-13
Сургут (3462)77-98-35
Сыктывкар (8212)25-95-17
Тамбов (4752)50-40-97

Тверь (4822)63-31-35
Тольятти (8482)63-91-07
Томск (3822)98-41-53
Тула (4872)33-79-87
Тюмень (3452)66-21-18
Ульяновск (8422)24-23-59
Улан-Удэ (3012)59-97-51
Уфа (347)229-48-12
Хабаровск (4212)92-98-04
Чебоксары (8352)28-53-07
Челябинск (351)202-03-61
Череповец (8202)49-02-64
Чита (3022)38-34-83
Якутск (4112)23-90-97
Ярославль (4852)69-52-93

Россия +7(495)268-04-70

Казахстан +7(7172)727-132

Киргизия +996(312)96-26-47

www.elkos.nt-rt.ru | | eow@nt-rt.ru

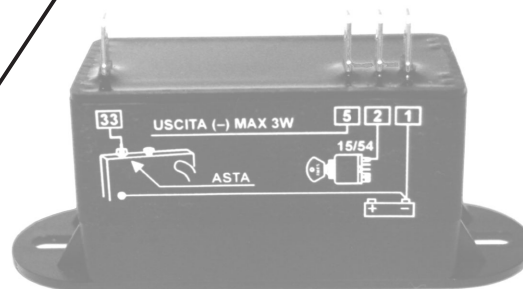
Технические характеристики на сигнализаторы уровня жидкости SOL-010/00, SOL-015/00 компании **ELCOS**

COOLING LIQUID PROBE FOR METAL RADIATORS TYPE SOL-015/00



ROD TYPE **AST-015/00**

TO BE MOUNTED CONNECTED
TO MODULE TYPE MOL-015/00



MODULE TYPE **MOL-015/00**

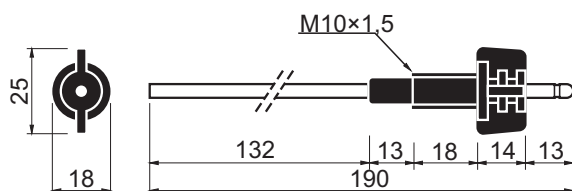
FUNCTIONING

It becomes active when the module is supplied. When the liquid falls below the level of the rod, the latter (after 3 seconds) enables an output which can be used by one of our devices or junction box so as to stop the motor. When the liquid returns to the correct level, the output is deactivated automatically.

TECHNICAL CHARACTERISTICS

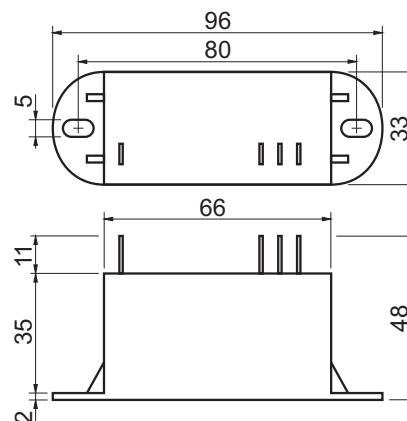
ROD TYPE AST-015/00

- Temperature range $-10 \div +100^{\circ}\text{C}$
- Maximum pressure 16 bar
- Weight 25 g



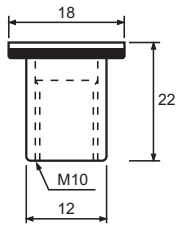
MODULE TYPE MOL-015/00

- Battery supply 12 and 24 V
- Supply voltage $8 \div 32 \text{ V}$
- Maximum circuit loading 10.5 mA
- Maximum output load (-) 3 W
- Maximum resistance of liquid between probe and mass 6000 OHM
- Protection level:
 - for the electronics IP 65
 - for the terminal board IP 00
- Temperature ran $-10 \div +70^{\circ}\text{C}$
- Weight 125 g



INSTALLATION

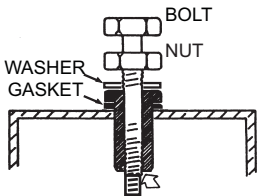
RIVET JOINT MOUNTING



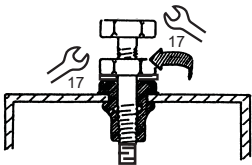
SUITABLE FOR THICKNESSES
OF 0.5 ÷ 1.5 mm

Ø 12.5

PIERCE THE RADIATOR (TAKE CARE NOT TO DAMAGE THE RADIATING MASS) AS FAR AS POSSIBLE FROM THE LIQUID ENTRANCE TUBE. ONLY BUR THE PART OUTSIDE THE RADIATOR.



CHECK THAT THE BOLT THREAD STICKS OUT OF THE JOINT BEFORE INSERTING IT INTO THE RADIATOR.

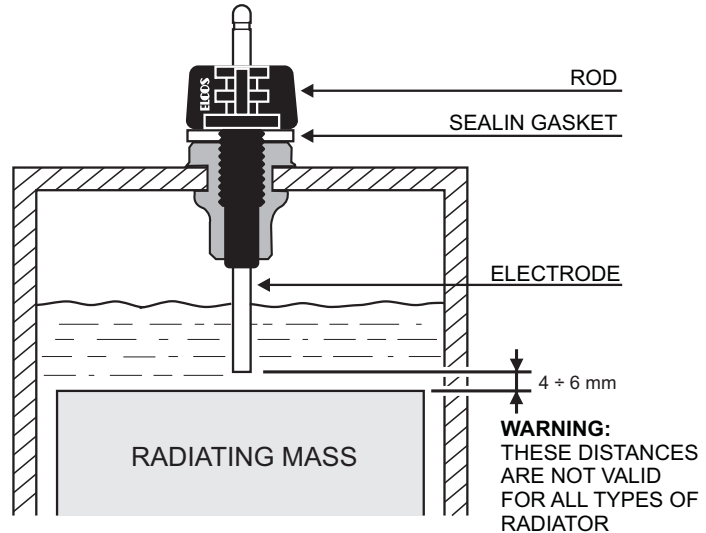


HOLDING THE HEAD OF THE BOLT FIRM, TIGHTEN THE NUT APPROX. 3 TURNS. THEN LOOSEN THE NUT AND UNSCREW THE BOLT COMPLETELY. THE JOINT IS NOW READY FOR ROD INSTALLATION.

EXAMPLE OF ROD MOUNTING

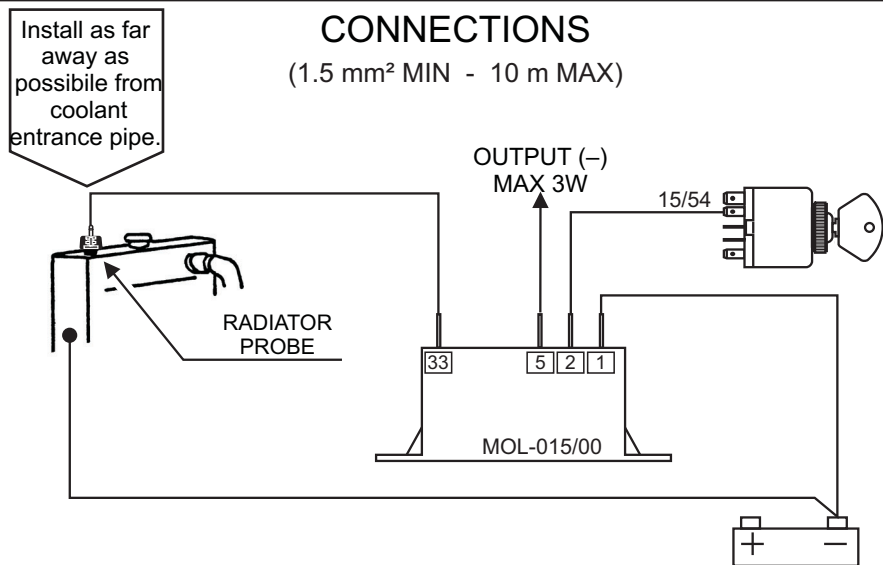
Mount the sealing gasket, shorten the electrode so that when the rod is screwed, the distance from the radiating mass is about 4 – 6 mm. With normal level fluctuations the electrode must remain in contact with the liquid.

SCREW WITHOUT USING A TOOL



CONNECTIONS

(1.5 mm² MIN - 10 m MAX)



ORDERING DATA

TYPE **SOL-015/00**

code **00241020**

THE PROBE COMPRISES THE FOLLOWING PARTS:

- MODULE **TYPE** MOL-015/00 code 00241002
- ROD **TYPE** AST-015/00 code 40190113
- RIVET JOINT (COMPLETE WITH: BOLT, NUT, WASHER AND R18/M10 GASKETS) code 40190112

COOLING LIQUID PROBE FOR METAL RADIATORS TYPE SOL-015/00

It controls the low radiator coolant level.

NOTICES

Warning: **Adhere closely to the following advice**



- Always install the module (MOL-015/00) under other equipment which produces or spreads heat
- Always follow the circuit diagram when making connections
- Check that the line loading and the consumption of the connected equipment are compatible with the technical characteristics
- Never use a battery charger for the emergency start-up, this could damage the module (MOL-015/00)
- To protect the safety of persons and the equipment, before connecting an external battery charger, disconnect the electrical plant terminals from the battery poles.

THIS PROBE IS NOT SUITABLE FOR OPERATING IN THE FOLLOWING CONDITIONS:

- where the environmental temperature is outside the limits indicated in the technical characteristics
- where there are high levels of heat from radiation caused by the sun, ovens or the like
- where there is the risk of fire or explosions
- where the module MOL-015/00 can receive strong vibrations or knocks.

ELECTROMAGNETIC COMPATIBILITY

This probe functions correctly only if inserted in plants which conform with the CE marking standards; it meets the exemption requirements of the standard EN61326-1 but it cannot be excluded that malfunctions could occur in extreme cases due to particular situations.

The installer has the task of checking that the disturbance levels are within the requirements of the standards.

RUNNING AND MAINTENANCE

The following maintenance operations should be performed every week:

- check the functioning of the probe
- check the condition of the batteries
- check that the conductors are tight, check the condition of the terminals.

UNLESS WE MAKE A WRITTEN DECLARATION STATING THE CONTRARY, THIS PROBE IS NOT SUITABLE FOR USE AS A CRITICAL IN EQUIPMENT OR PLANTS RESPONSIBLE FOR KEEPING PERSONS OR OTHER LIVING BEINGS ALIVE

YOUR ELECTRICAL TECHNICIAN CAN ASK US ANYTHING ABOUT THIS
PRODUCT BY TELEPHONING ONE OF OUR TECHNICIANS

**COOLING LIQUID PROBE
FOR METAL RADIATORS
TYPE SOL-015/00**

CONFORMITY DECLARATION



The company Elcos s.r.l. assumes full responsibility for declaring that
the equipment:

type: **SOL-015/00**

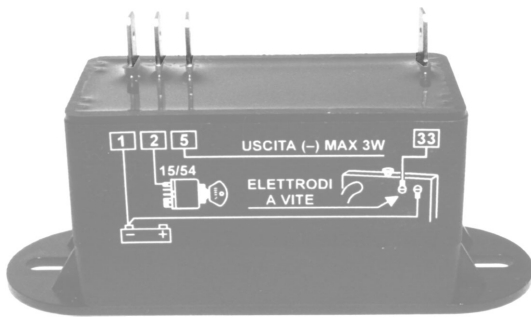
installed and used in the ways and for the purposes described in the
instruction and user manual, is in conformity with the directive:

- 2004/108/CE related to the electromagnetic compatibility and
 that repeals the directive 89/336/CEE,
- 2011/65/UE on the restriction of the use of certain hazardous
 substances in electrical and electronic equipment,

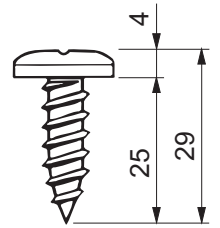
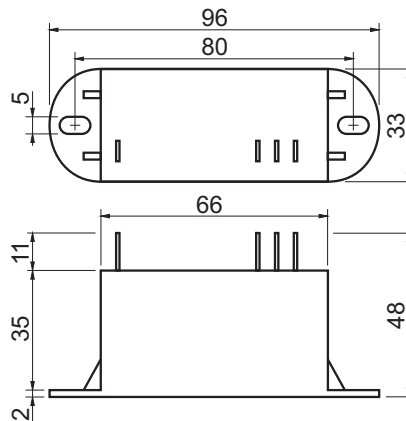
because it is built and functions in accordance with the harmonized
Standards:

EN61326-1, EN61326/A1, EN61000-4-2, EN61000-4-4, EN61000-4-6,
EN60529.

COOLING LIQUID PROBE FOR RADIATOR WITH PLASTIC EXPANSION UPPER CHAMBER TYPE SOL-010/00



MODULE TYPE **MOL-015/00**



SCREW ELECTRODE
TYPE **E25**

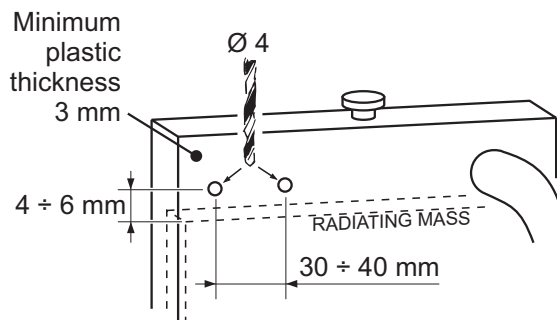
FUNCTIONING

It becomes active when the module is supplied. When the coolant falls below the level of the electrode, this (after 3 seconds) enables an output which can be used by one of our devices or panels so as to stop the motor. When the liquid returns to the correct level, the output is deactivated automatically.

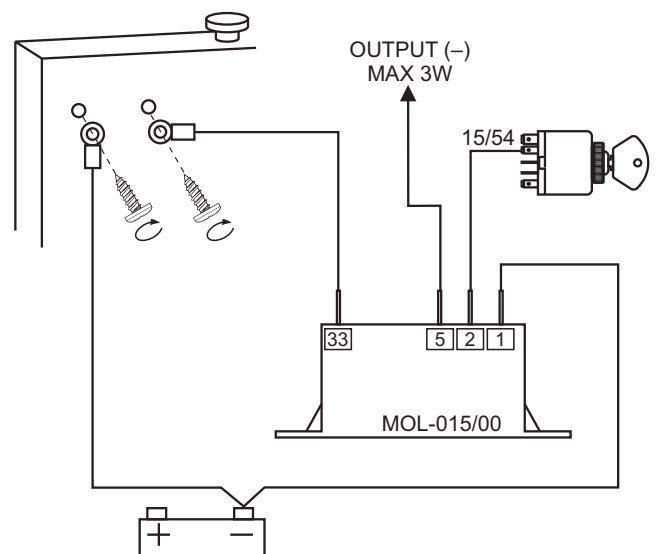
INSTALLATION

DRILLING FOR ASSEMBLY OF SCREW ELECTRODES

DRILL THE RADIATOR (TAKE CARE NOT TO DAMAGE THE RADIATING MASS) AS FAR AS POSSIBLE FROM THE LIQUID ENTRANCE TUBE, LIKE THE FOLLOWING DRAWING.



CONNECTIONS



CHARACTERISTICS

- Battery supply 12 and 24V
- Supply voltage 8 ÷ 32 V
- Maximum circuit loading 10.5 mA
- Maximum output load (-) 3 W
- Maximum resistance of liquid between probe and mass 6000 OHM
- Degree of protection:
 - for the electronics IP 65
 - for the terminal board IP 00
- Temperature range -10 ÷ +70°C
- Weight 125 g

ORDERING DATA

TYPE **SOL-010/00** code **00241022**

THE PROBE COMPRISES THE FOLLOWING PARTS:

- MODULE TYPE MOL-015/00 code 40241002
- SCREW ELECTRODES
TYPE **E25** (TWO)
TERMINALS SUPPLIED code 40190115

COOLING LIQUID PROBE FOR RADIATOR WITH PLASTIC EXPANSION UPPER CHAMBER TYPE SOL-010/00

It controls the low radiator coolant level.

NOTICES

Warning:

Adhere closely to the following advice



- Always install the module MOL-015/00 under other equipment which produces or spreads heat
- Always follow the circuit diagram when making connections
- Check that the line loading and the consumption of the connected equipment are compatible with the technical characteristics
- Never use a battery charger for the emergency start-up, this could damage the module MOL-015/00
- To protect the safety of persons and the equipment, before connecting an external battery charger, disconnect the electrical plant terminals from the battery poles.

THIS PROBE IS NOT SUITABLE FOR OPERATING IN THE FOLLOWING CONDITIONS:

- where the environmental temperature is outside the limits indicated in the technical characteristics
- where there are high levels of heat from radiation caused by the sun, ovens or the like
- where there is the risk of fire or explosions
- where the module MOL-015/00 can receive strong vibrations or knocks.

ELECTROMAGNETIC COMPATIBILITY

This probe functions correctly only if inserted in plants which conform with the CE marking standards; it meets the exemption requirements of the standard EN50082-2 but it cannot be excluded that malfunctions could occur in extreme cases due to particular situations.

The installer has the task of checking that the disturbance levels are within the requirements of the standards.

RUNNING AND MAINTENANCE

The following maintenance operations should be performed every week:

- check the functioning of the probe
- check the condition of the batteries
- check that the conductors are tight, check the condition of the terminals.

UNLESS WE MAKE A WRITTEN DECLARATION STATING THE CONTRARY, THIS PROBE IS NOT SUITABLE FOR USE AS A CRITICAL IN EQUIPMENT OR PLANTS RESPONSIBLE FOR KEEPING PERSONS OR OTHER LIVING BEINGS ALIVE

YOUR ELECTRICAL TECHNICIAN CAN ASK US ANYTHING ABOUT THIS
PRODUCT BY TELEPHONING ONE OF OUR TECHNICIANS

CONFORMITY DECLARATION



We take full responsibility for declaring that the equipment:

Type: **SOL-010/00**

installed and used in the ways and for the purposes described in the instruction and user manual, is in conformity with the directive:

- 2004/108/CE related to the electromagnetic compatibility and that repeals the directive 89/336/CEE,

because it is built and functions in accordance with the harmonized Standards:

EN61326-1, EN61326/A1, EN61000-4-2, EN61000-4-4, EN61000-4-6,
EN60529

Алматы (7273)495-231
Ангарск (3955)60-70-56
Архангельск (8182)63-90-72
Астрахань (8512)99-46-04
Барнаул (3852)73-04-60
Белгород (4722)40-23-64
Благовещенск (4162)22-76-07
Брянск (4832)59-03-52
Владивосток (423)249-28-31
Владикавказ (8672)28-90-48
Владимир (4922)49-43-18
Волгоград (844)278-03-48
Вологда (8172)26-41-59
Воронеж (473)204-51-73
Екатеринбург (343)384-55-89

Иваново (4932)77-34-06
Ижевск (3412)26-03-58
Иркутск (395)279-98-46
Казань (843)206-01-48
Калининград (4012)72-03-81
Калуга (4842)92-23-67
Кемерово (3842)65-04-62
Киров (8332)68-02-04
Коломна (4966)23-41-49
Кострома (4942)77-07-48
Краснодар (861)203-40-90
Красноярск (391)204-63-61
Курск (4712)77-13-04
Курган (3522)50-90-47
Липецк (4742)52-20-81

Магнитогорск (3519)55-03-13
Москва (495)268-04-70
Мурманск (8152)59-64-93
Набережные Челны (8552)20-53-41
Нижний Новгород (831)429-08-12
Новокузнецк (3843)20-46-81
Ноябрьск (3496)41-32-12
Новосибирск (383)227-86-73
Омск (3812)21-46-40
Орел (4862)44-53-42
Оренбург (3532)37-68-04
Пенза (8412)22-31-16
Петрозаводск (8142)55-98-37
Псков (8112)59-10-37

Пермь (342)205-81-47
Ростов-на-Дону (863)308-18-15
Рязань (4912)46-61-64
Самара (846)206-03-16
Саранск (8342)22-96-24
Санкт-Петербург (812)309-46-40
Саратов (845)249-38-78
Севастополь (8692)22-31-93
Симферополь (3652)67-13-56
Смоленск (4812)29-41-54
Сочи (862)225-72-31
Ставрополь (8652)20-65-13
Сургут (3462)77-98-35
Сыктывкар (8212)25-95-17
Тамбов (4752)50-40-97

Тверь (4822)63-31-35
Тольятти (8482)63-91-07
Томск (3822)98-41-53
Тула (4872)33-79-87
Тюмень (3452)66-21-18
Ульяновск (8422)24-23-59
Улан-Удэ (3012)59-97-51
Уфа (347)229-48-12
Хабаровск (4212)92-98-04
Чебоксары (8352)28-53-07
Челябинск (351)202-03-61
Череповец (8202)49-02-64
Чита (3022)38-34-83
Якутск (4112)23-90-97
Ярославль (4852)69-52-93

Россия +7(495)268-04-70

Казахстан +7(7172)727-132

Киргизия +996(312)96-26-47

www.elkos.nt-rt.ru | eow@nt-rt.ru